

**WARNING:** Before you set up and operate your Dell PowerVault system, review the safety instructions that came with your system.

## Dell Software License Agreement

- Before using your system, please read the Dell Software License Agreement that came with your system.
- You must consider any CD, DVD, or diskette set of Dell installed software as BACKUP copies of the software installed on your system's hard-disk drive.
- If you do not accept the terms of the agreement, please call the customer assistance telephone number. For customers in the United States, call 800-WWW-DELL (800-999-3355). For customers outside the United States, visit [support.dell.com](http://support.dell.com), specify your country or region in the Choose a Country/Region drop-down menu, and click Contact Us.

## Verify Package Contents

Verify that all components listed on your packing slip are available. Save all documentation and accessories.

## Install the System in a Rack

This system requires a properly grounded electrical outlet, a compatible rack, and a rack installation kit.

## Locating Your System Service Tag

- When you contact technical support, the Express Service Code helps route your call to the appropriate support area and the Service Tag number helps identify your system.
- In the following figure, the location of the Service Tag number and the Express Service Code are illustrated for a rackable system. Write down and store this information in a safe place.

**NOTE:** The illustrations in this document are not intended to represent a specific storage system.



## Default Password

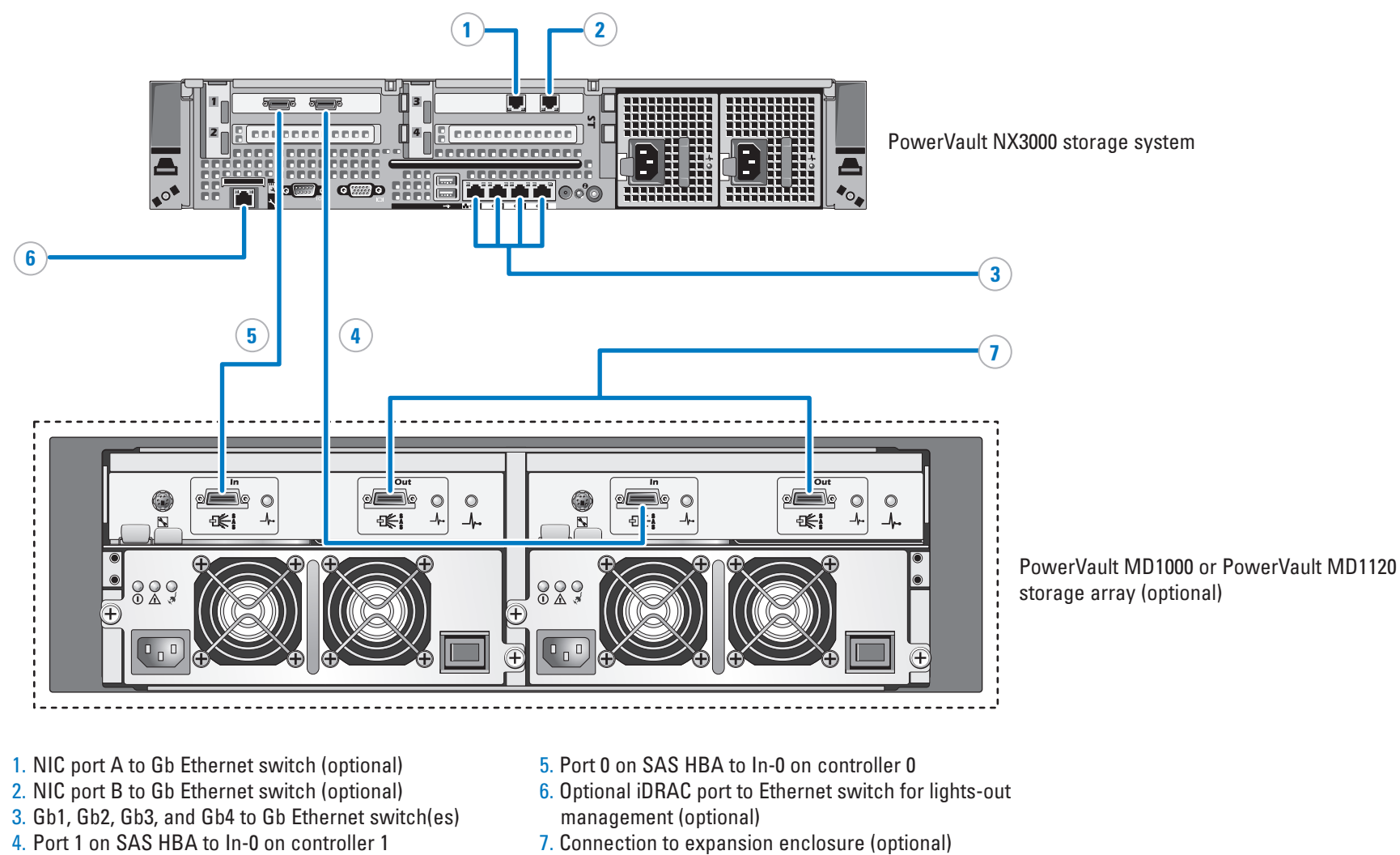
The default password for the network attached storage (NAS) system is **Stor@ge!**

## Default System Name

Your system is configured with a default system name of D<ServiceTag> where <ServiceTag> is the Service Tag number located on the system.

## 1 Before You Begin

Check for documentation and information updates on [support.dell.com/manuals](http://support.dell.com/manuals).  
Always read the updates first because they often supersede information in other documents.



## Power-Up Procedure

You must first turn on the Dell PowerVault MD1000 or PowerVault MD1120 storage array and additional expansion enclosure(s) if any. The expansion status LED displays steady blue. If the status LED displays a solid amber light, the PowerVault storage array is initializing. After the storage arrays and enclosure(s) are initialized, turn on the PowerVault NX3000 storage system.

## Connection Procedure

### Using a Remote Desktop

If Dynamic Host Configuration Protocol (DHCP) and Domain Name System (DNS) are implemented on your network, your system automatically configures the network settings. You can launch Remote Desktop from a client and remotely access the NAS system using the default system name.

For example, in the Remote Desktop Connection window, type D<ServiceTag>

where <ServiceTag> is the Service Tag number located on the system.

### Using a Keyboard, Video, and Mouse

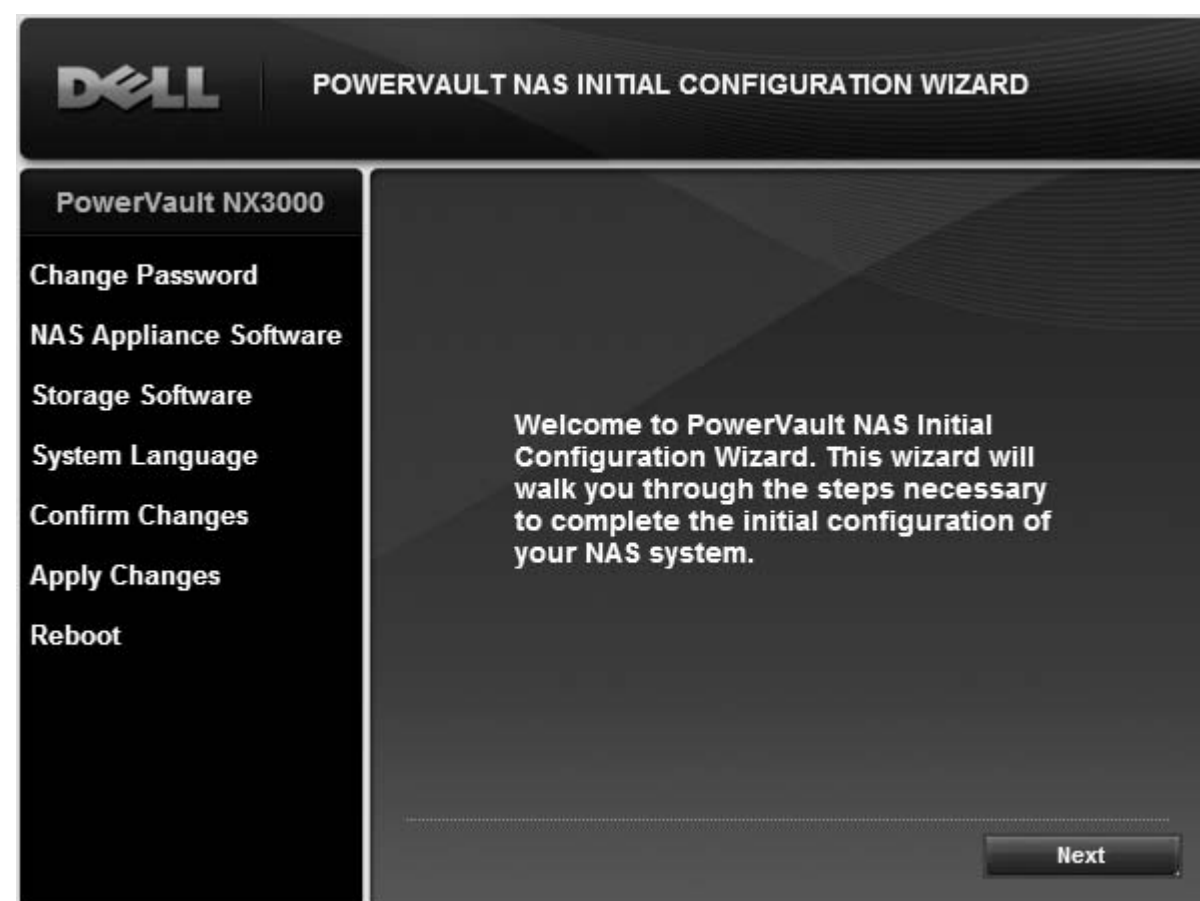
Connect a keyboard, monitor, and mouse directly to the NAS system for local administration.

**NOTE:** You can also use the optional iDRAC interface for remote administration. For information about initial setup, configuring iDRAC, and console redirection, see the integrated Dell remote access controller User's Guide at [support.dell.com/manuals](http://support.dell.com/manuals).

## 2 Cabling the System or Solution

## 3 Power-Up and Connection Procedure

# Setting Up Your Dell PowerVault NAS Solution *(continued)*



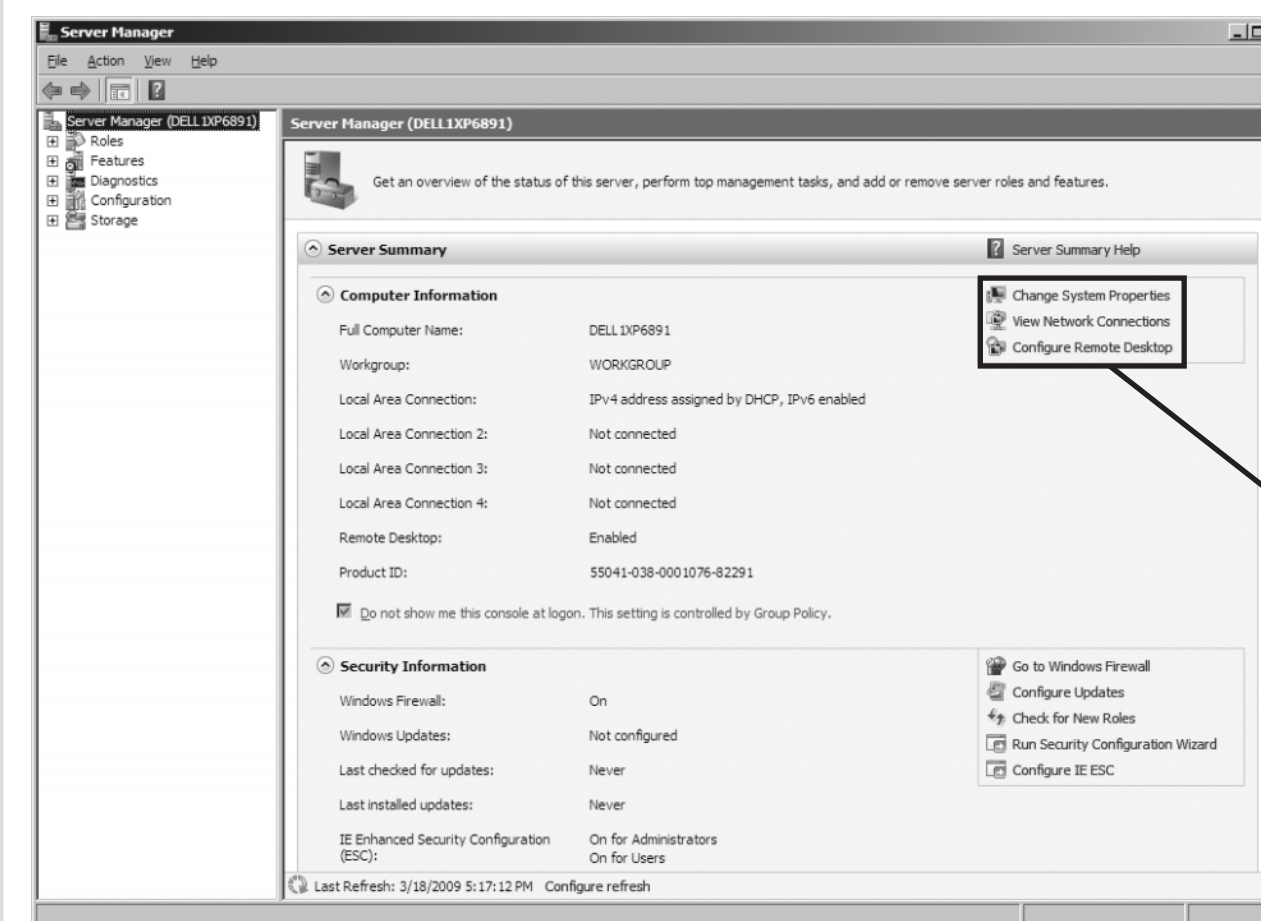
The **PowerVault NAS Initial Configuration Wizard** runs when you first log on to the PowerVault NX3000 storage system.

The initial configuration tasks include:

- Changing the local administrator default password
- Selecting the system language
- Confirming the settings

The **PowerVault NAS Initial Configuration Wizard** also configures the NAS specific software. Once the wizard is complete, you will be prompted to reboot the system.

## 4 Initial Configuration



The **Server Manager** window opens when the administrator logs on to the system. Using **Server Manager**, you can perform the following tasks:

- Initial computer configuration
- Configure networking
- Change the computer name
- Specify the language and regional settings
- Change the date and time settings

## 5 System Configuration

### Utility Share

Utility share is a Server Message Block (SMB) share preconfigured on your system. The utility share allows you to view system documentation either locally or remotely using a web browser. To access the utilities loaded on your system, type `\\D<ServiceTag>\NASUtils\`

where `<ServiceTag>` is the Service Tag number located on the system.

### Documentation

Documentation for the system is available in the utility share. For documentation and information updates, see the Dell Support website at [support.dell.com/manuals](http://support.dell.com/manuals).

### Dell OpenManage™ Server Administrator

You can monitor your system remotely using Dell OpenManage Server Administrator. To access Server Administrator, connect to the secure port, 1311, of your NAS system.

For example, type:

```
https://D<ServiceTag>:1311
```

where `<ServiceTag>` is the Service Tag number located on the system.

## 6 Additional Information

Information in this document is subject to change without notice.  
© 2009 Dell Inc. All rights reserved.

Reproduction of these materials in any manner whatsoever without the written permission of Dell Inc. is strictly prohibited.

Dell, the DELL logo, OpenManage, and PowerVault are trademarks of Dell Inc. Dell disclaims proprietary interest in the marks and names of others.

May 2009